

Ventyx Ellipse Asset & Work Management



Ventyx Ellipse Asset & Work Management is a core module of Ventyx's enterprise asset management (EAM) solution that delivers optimum asset performance by improving asset utilization, ensuring equipment readiness and safety, increasing plant and equipment productivity and decreasing life cycle costs.

The Challenge

In order to deliver high quality products and services at competitive prices, asset-intensive industries must endeavor to minimize their operational costs. Asset maintenance represents a significant proportion of these costs. As such, it is critical that these costs are managed through the entire asset life cycle – from procurement, through operational life and finally to divestment.

The Solution

The ultimate goal of any asset-intensive organization is to realise premium efficiencies that flow directly to the bottom line. Ventyx Ellipse Asset & Work Management delivers optimum asset performance by improving asset utilization, ensuring equipment readiness and safety, increasing plant and equipment productivity and decreasing life cycle costs.

The Ventyx Ellipse Asset & Work Management solution contributes to enhanced asset performance

by providing asset intensive organizations with a range of powerful, enterprise-grade features, including:

- **Detailed operating and production statistics** to facilitate the automation of scheduled maintenance. This maximizes equipment utilization and productivity by providing transparency of ongoing maintenance requirements.
- **Configurable condition monitoring** of equipment and fitted components to estimate lifespans and automatically raise work orders to prevent breakdowns.
- **Scheduled and unscheduled maintenance** provides flexibility and agility for quick response to different maintenance strategies.
- **Seamless integration with Reliability Centered Maintenance (RCM) tools** so that information is exchange through the maintenance strategy support system for better strategy implementation, analysis and modification.
- **Analysis of equipment history and costs** to allow monitoring of the whole-of-life costs for any given asset, delivering more accurate data from a business perspective.

The Solution (continued)

- **Faster integration to SCADA systems** through Services Oriented Architecture (SOA) technology. SCADA systems can now link to Ventyx Ellipse more readily, for real-time access to data, greater transparency into the operation of plant and equipment and faster response to maintenance issues. Enables visibility to coordinate work activities for both short and long term projections.
- **Assignment of unique equipment and plant numbers** to allow different views of equipment, promoting in-depth analysis of separate installations according to departmental needs. For example, maintenance employees can view the plant from a technical perspective, while business users can analyze operational data for cost analysis.

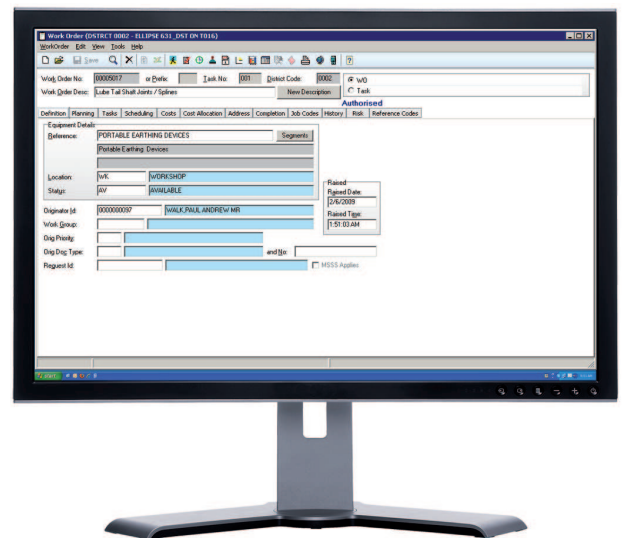
The Benefits

Ventyx Ellipse Asset & Work Management has been specifically developed for asset-intensive organizations. Ventyx understands that these organizations need full visibility and control of production costs.

With this in mind, Ventyx has focused on the development of functionality to bring real business benefit through improved asset and resource utilization, improved equipment readiness and increased safety, reduced asset lifecycle costs, optimization of complex maintenance tasks and better strategic planning.

Ventyx Ellipse Asset & Work Management: A powerful solution for optimizing your assets to help you maximize business performance and profitability.

- **Planned resource and maintenance scheduling**, ensuring minimization of staff and equipment downtime, and allowing for long-term production planning and scheduling.
- **Support for mobile workforces** to enhance productivity through constant access to maintenance data, reducing the margin for error in data capture and reporting, and maximizing workforce and plant utilization.
- **Construction works management** through work requests, compatible units, estimating, and job packaging. Development and construction costs can be calculated and tracked from planning through to completion, delivering a more accurate view for budgeting and accounting purposes, including capitalization processes.



VENTYX  TM
AN ABB COMPANY

www.ventyx.com

Ventyx, an ABB company, is the world's leading supplier of enterprise software and services for essential industries such as energy, mining, public infrastructure and transportation. Ventyx solutions bridge the gap between information technologies (IT) and operational technologies (OT), enabling clients to make faster, better-informed decisions in both daily operations and long-term planning strategies.

Some of the world's largest private and public enterprises rely on Ventyx solutions to minimize risk, enhance operational and financial performance, and execute the right strategies for the future.

To learn more about Ventyx solutions visit www.ventyx.com or contact a Ventyx sales representative today.