

Product Overview

Velocity Suite: Investment Grade Data and Analysis



More than just powerful analytical tools, the Velocity Suite is the industry's most trusted source for data.

- Supply & Demand Forecasting
- Mergers & Acquisitions
- Power Plant Assessments
- Market Analysis
- Industry Benchmarking
- Fuel Procurement
- Energy Marketing & Trading
- Market & Resource Visualization
- Resource Planning
- Reserve Margin Analysis
- Emissions Strategy
- Regulatory Compliance
- Asset Optimization

WHY THE VELOCITY SUITE IS A SUPERIOR ENERGY MARKET INTELLIGENCE SOLUTION

More than just powerful analytical tools, the Velocity Suite is the industry's most trusted source for data.

Virtual Analysts

Today's energy professionals need more than accurate data; they need powerful analytical tools to quickly find answers.

Virtual Analysts™ (VAs) bring analytical firepower to the desktop. They allow anyone -- regardless of their level of product training -- to quickly break down and assess complex and data intensive industry problems.

Each product in the Velocity Suite contains a set of VAs that convert common, time-consuming tasks into a few "quick clicks".

VAs let you dynamically interact with data to conduct specific analyses quickly. Questions that previously required a string of complex, tedious tasks can now be answered by simply selecting a few items within pre-built applications.

Virtual Analysts reduce your learning curve so more people in your organization can use the Velocity Suite.

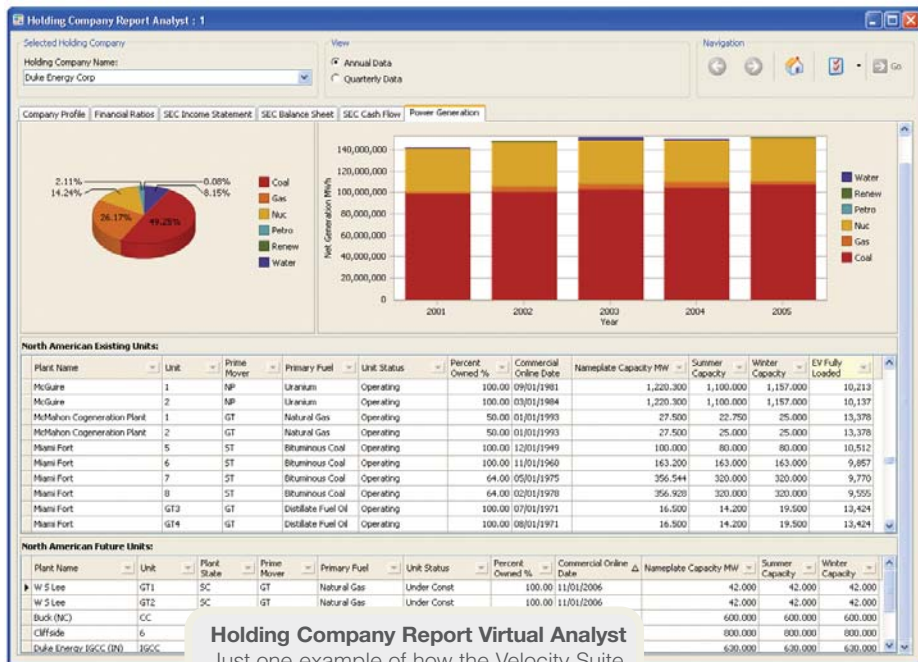
Our dynamic development approach allows us to design and deploy new VAs quickly -- part of our ongoing commitment to the continuous development and improvement of the Velocity Suite.

Single Application and Integrated Data: Means Faster, Better Results

Energy markets have converged. Analysts need the ability to quickly evaluate the activities of market participants and industry dynamics across commodities without having their thought process derailed by jumping between applications.

This is why the Velocity Suite has been delivered as one integrated application since its inception. Each of our products -- EV Power, EV Fuels, EV Market-Ops, EV Weather, FTR Trader and EV Energy Map -- run inside the same product window, allowing you to look at coal production, daily gas prices, plant capacity factors, weather normalized loads and transmission all at the same time.

If your analysis of a company's activities in power markets quickly leads to the need to measure their competitiveness in fuels markets, the Velocity Suite allows you to seamlessly continue your analysis.



Holding Company Report Virtual Analyst
Just one example of how the Velocity Suite streamlines the analytical process

Sophisticated Analytical Tools in a Single Application The Velocity Suite includes an easy-to-use query tool with interactive output grids, charting and mapping capabilities.

DataMiner

One of the most powerful features available to Velocity Suite clients is the DataMiner.™ You can quickly retrieve all data and geographic details available for a company in each sector of the energy industry. The DataMiner has proven to be one of the most valuable aspects of the Velocity Suite delivering faster and more consistent results.

Better Technology and a New Standard for Data Updates

What data delivery method is right for you? Do you prefer having the products installed locally or is an online solution best for you? By taking advantage of the most powerful technology available, Ventyx offers their clients the choice to determine which delivery method best meets *their* needs.

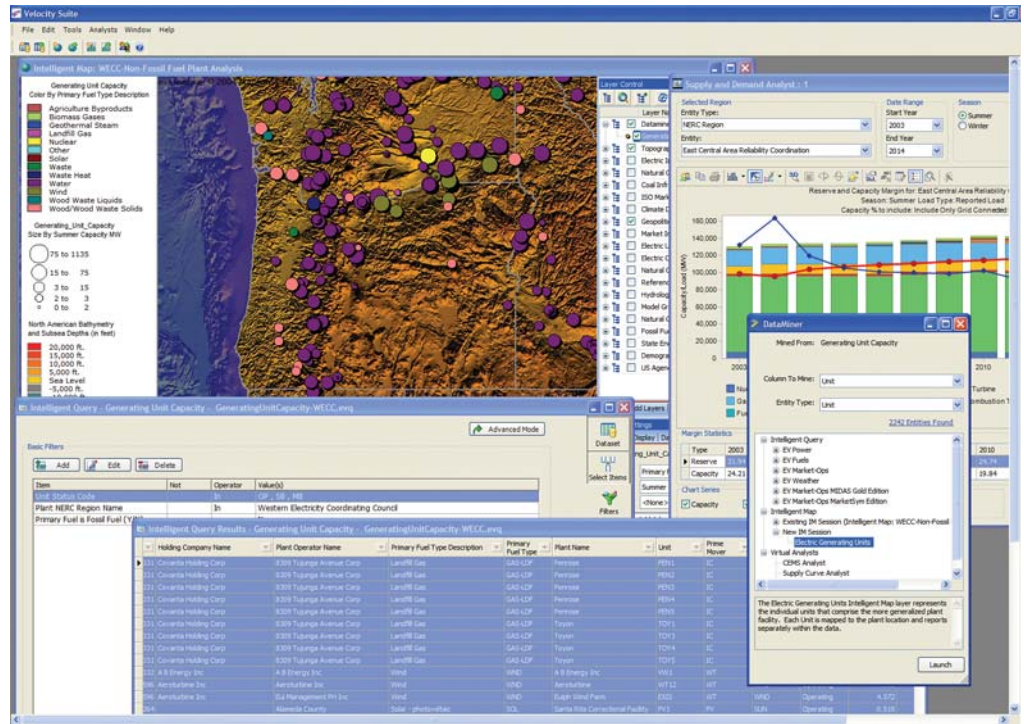
The Velocity Suite can be used online and our clients receive data updates every day — even if the application is installed locally.

Is your position in the market affected by pipeline markets or the spot price of power? By taking advantage of our daily online updates, you won't be left without the critical data you need.

Client Training and Support

Velocity Suite clients get unlimited hands-on training (in person or through the web) at no additional charge. Request additional training as often as you like!

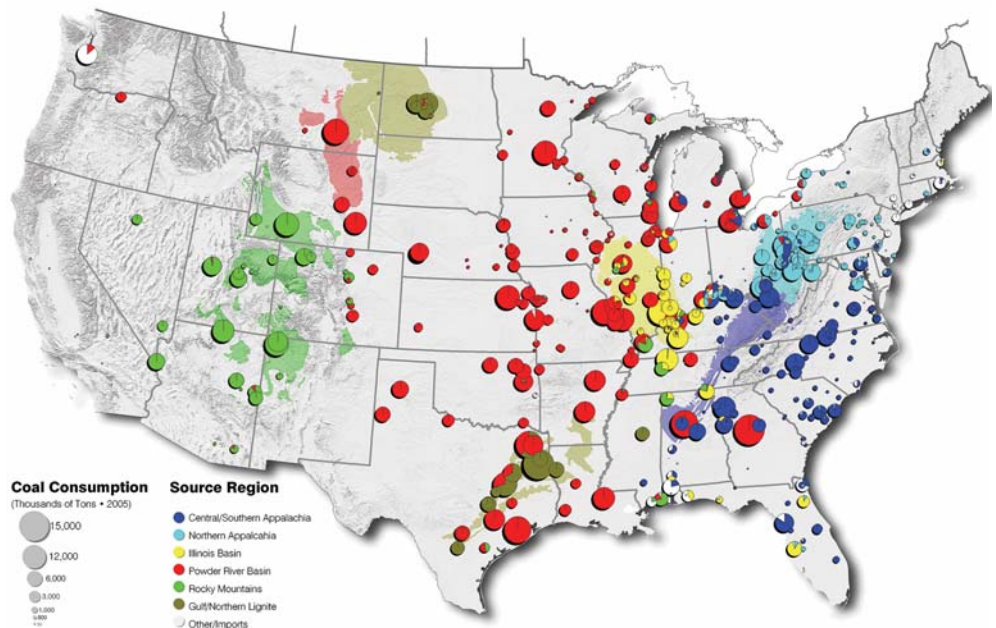
Support — ranging from using tools, understanding the content, or assistance from our experts on how data can be applied to your specific analyses — is unlimited and there's never an additional charge.



Independent Analysis Hours: Let Us Be a Part of Your Analytical Staff

We have the industry's most experienced support staff. As part of your service, you receive an allocation of *Independent Analysis Hours* so we can help you when you need it.

These hours can be used to perform work within the Velocity Suite, research the industry for data that you need or to create presentation quality maps.



EV FUELS

INTEGRATED CONTENT
FOR BOTH GAS AND
COAL MARKETS

Who produces high BTU, low sulfur coal? Who buys it?

How much mercury is in the coal burned at a particular plant?

What is the level of gas in storage at a specific facility and what is the average net change day by day?

Who owns firm capacity on a pipeline?

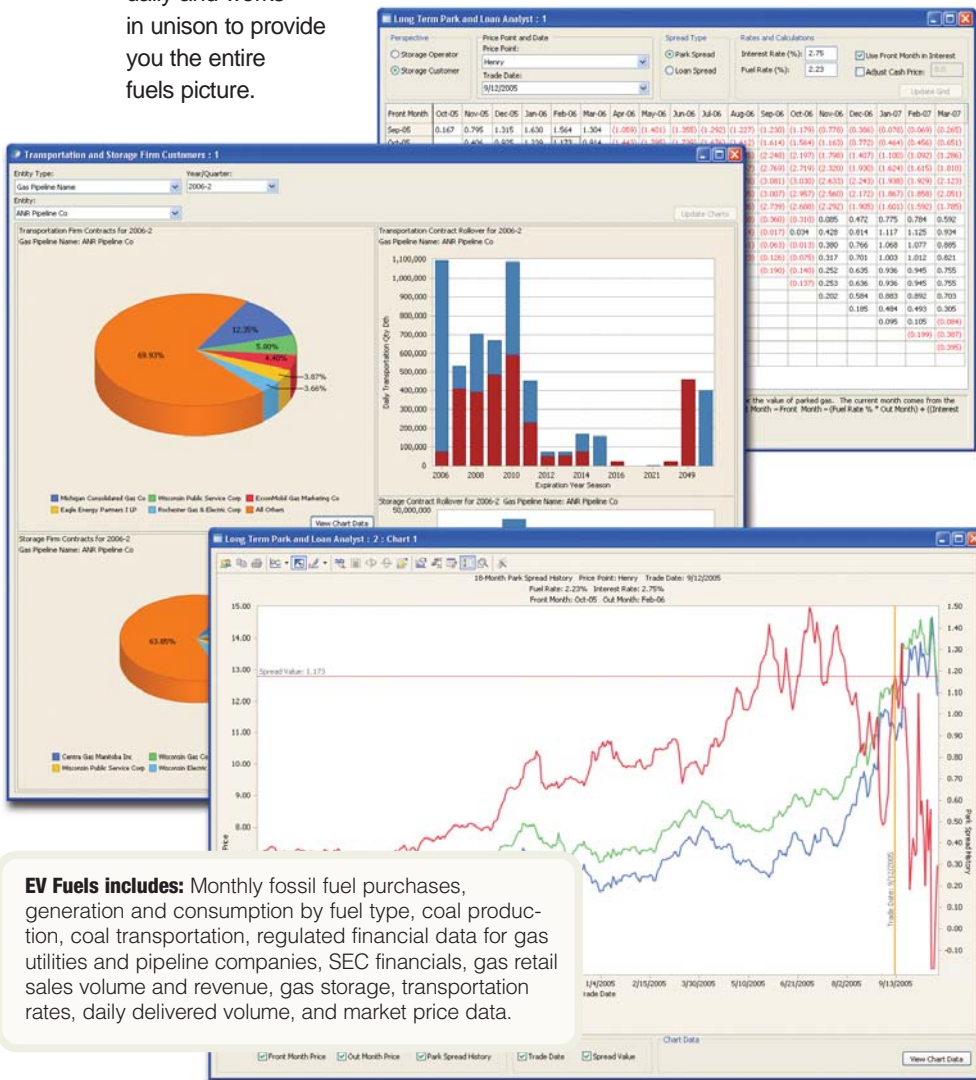
Who purchased that capacity in the release markets at what % of tariff?

What is the status of announced LNG projects?

How might a proposed project impact pipeline flows?

We believe that you can't separate the fuel supply market into pieces. Energy markets have evolved dramatically in the past several years. In many markets, revenue for coal plants is dictated by the cost of gas. In the future, emissions costs may move coal plants to the margin and increase demand for natural gas. EV Fuels' extensive coal and natural gas information is updated

daily and works in unison to provide you the entire fuels picture.



EV Fuels includes: Monthly fossil fuel purchases, generation and consumption by fuel type, coal production, coal transportation, regulated financial data for gas utilities and pipeline companies, SEC financials, gas retail sales volume and revenue, gas storage, transportation rates, daily delivered volume, and market price data.

DATA COVERAGE:

- Industry View
 - Gas Company Overview
 - Gas Deliveries to Customers

- Transaction Details
 - Pipeline Capacity Release by Flow Path
 - Natural Gas Pipelines Index of Customers
 - Current Effective Gas Tariff Rates
 - Gas Imports & Exports

- Gas Operations Statistics
 - Pipeline Operationally Available Capacity
 - Gas O&M Expenses
 - Gas Account
 - Transmission & Distribution Line Statistics
 - Storage Injections & Withdrawals
 - Compressor Stations
 - Proposed Pipelines & Expansions
 - Monthly Pipeline Revenue & Volume

- Gas Storage Operations
 - Daily Storage Capacity by Facility
 - Underground Storage Facilities
 - LNG Storage Facilities
 - Auxiliary Peaking Storage Facilities

- Power Plant Operations
 - Monthly Plant Generation & Consumption
 - Unit Emission Controls
 - Monthly Plant Fuel Transactions

- Coal Statistics
 - Monthly Plant Coal Transportation Costs
 - Coal Mine Production
 - Estimated Coal Stockpile
 - Coal Import & Exports
 - Coal Spot Price Forecast

- Gas Regulatory Financials
 - Comparative Balance Sheet
 - Statement of Income
 - Statement of Cash Flow
 - Statement of Retained Earnings
 - Distribution of Salaries & Wages
 - Gas Operating Revenues
 - Gas Plant in Service
 - Accum Provision for Depreciation, Amortization & Depletion
 - Accum Provision for Depreciation Gas Utility Plant

- SEC 10K & 10Q Financials
 - Comparative Balance Sheet
 - Statement of Income & Cash Flow
 - Daily Stock Prices
 - Financial Ratios & Statistics

- Market Drivers
 - Daily Gas Prices
 - Weekly Natural Gas Storage
 - Natural Gas Supply & Disposition
 - Monthly Natural Gas Storage
 - State Natural Gas Production
 - Baker Hughes Rig Counts
 - NYMEX & Clearport Futures
 - UPI Coal Price Forwards
 - Cantor Fitzgerald Allowance Prices
 - Weekly Crude Oil Stocks

EV ENERGY MAP

BEYOND PRESENTATIONS —
INVESTMENT QUALITY SPATIAL ANALYSIS

How can I visualize LMP market data?

How does geographic location impact my delivered fuel cost?

How can I be sure I've selected the best location for my project?

Data visualization is only part of spatial analysis. From simply showing a picture of a company's assets, to a complex analysis that examines how industry infrastructure is interrelated, EV Energy Map helps you understand today's complex markets.

EV Energy Map is the industry's most advanced mapping application. It seamlessly integrates market data that is updated daily with aerial imagery and the most accurate geospatial data, making it an extremely powerful mapping application.

DATA COVERAGE:

Natural Gas Industry Layers

- Natural Gas Pipelines
- Receipt / Delivery Points
- Natural Gas Storage Facilities
- LNG Facilities both existing and proposed
- Gas Import/Export Points & Market Centers
- Local Distribution Company Territories
- Natural Gas Holding Companies

Coal Industry Layers

- Mines
- Railroads
- Coal Basins
- Navigable Waterways
- Coal Docks / Tipples

Electric Industry Layers

- Electric Generating Units
- Power Plants
- Transmission Lines
- Substations
- Flowgates
- Electric Service Territories
- Electric Holding Company Territories
- Balancing Authorities
- NYMEX and ICE Price Points
- NERC Regions/Sub regions
- ISO / RTO regions
- ISO Zones
- LMP Points

Environmental Layers

- Renewable Portfolio Standards by State
- Non-Attainment Regions
- Land Use Topo Image

Reference Layers

- Counties, Major Cities, States, Zip codes
- Urbanized Areas
- Cities
- Major Roads
- Rivers, Lakes and Aquifers
- Lakes
- Aquifers
- Stream Gauging Stations
- Census Tracts

Background Images

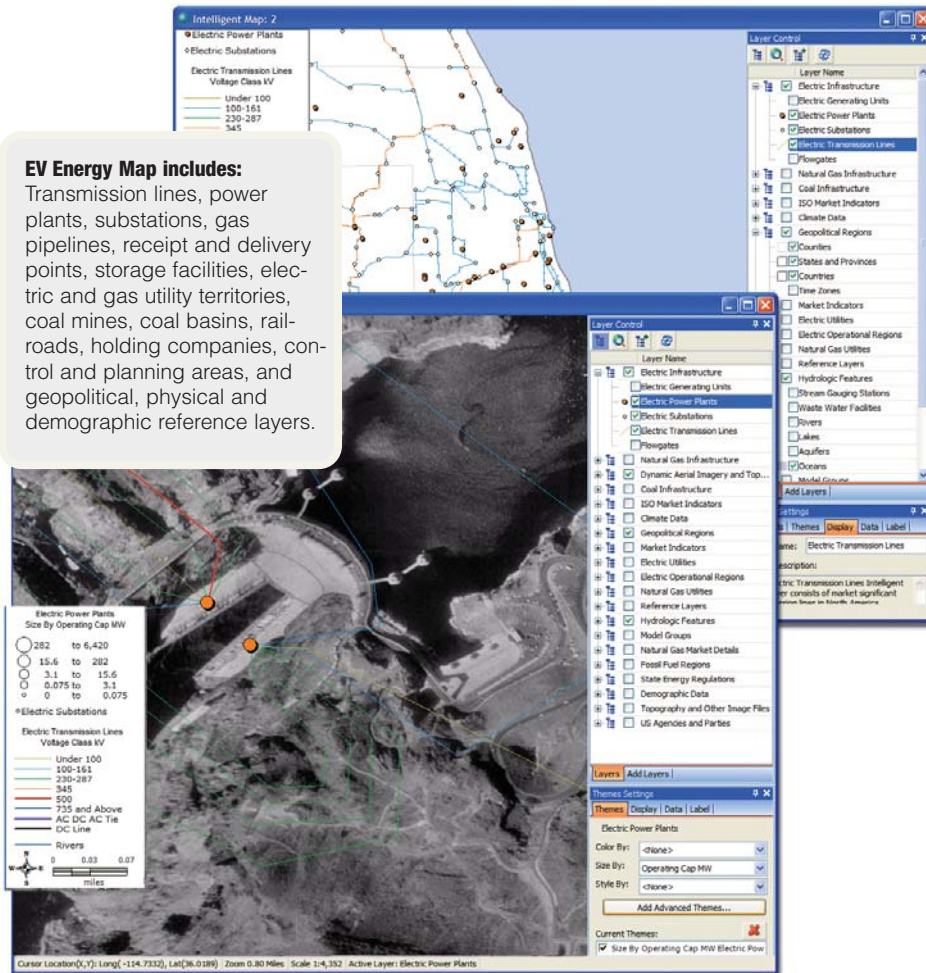
- High Resolution Color Topography
- High Resolution Bathymetry
- US Wind Resources
- US Solar Resources
- Western US Geothermal Resources
- US Land Use
- US Average Annual Precipitation

Aerial Imagery

- Raster Graphics (DRG)
- Digital Ortho Photographs (DOQ)
- High Resolution Urban Imagery

EV Energy Map includes:

Transmission lines, power plants, substations, gas pipelines, receipt and delivery points, storage facilities, electric and gas utility territories, coal mines, coal basins, railroads, holding companies, control and planning areas, and geopolitical, physical and demographic reference layers.



Mapping layers included with EV Energy Map are the most detailed and most complete energy mapping layers available.

EV Energy Map makes extensive use of aerial imagery in our development of the electric infrastructure layers to provide you with optimum accuracy.

EV POWER

A COMPREHENSIVE VIEW OF NORTH AMERICAN POWER MARKETS

Who owns a unit and how much does it cost to operate?

What will the hourly price of power be at Entergy next year?

How will an announced merger impact regional generation markets?

How many energy service providers are active in Pennsylvania?

EV Power combines all the data on the electric industry with complete coverage on IOUs, generation and transmission cooperatives, distribution cooperatives, municipal utilities, non-regulated market participants, and generating assets, and updates it daily with the latest available information.

EV Power seamlessly integrates primary research on power plant new build, rerates and retirements provided in New Entrants.

DATA COVERAGE:

Industry View
• Electric Company Overview
• Electric Company Energy Account
• Electric Company Retail Sales

Plant Operations Statistics
• Existing Generating Unit Capacity
• Future Generating Unit Capacity
• Monthly Plant Production Costs
• Monthly Plant Fuel Costs
• Generating Plant O&M Statistics
• Monthly Plant Generation & Consumption
• Existing & Planned Emissions Controls
• Document Library Including Air Permits

Utility Operations Statistics
• Electric Energy Account
• Electric O&M Expenses
• Monthly Peaks & Output
• Transmission & Distribution Line Statistics

Market Drivers
• Daily Power Prices
• Forward Power Prices
• Short Term Price Forecasts

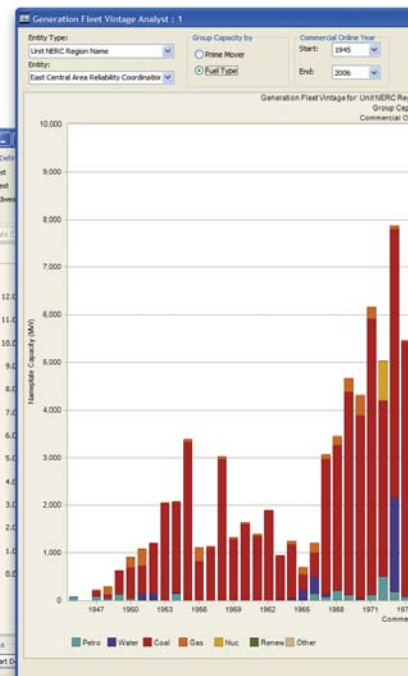
Wholesale Transaction Details
• Wholesale Power Sales
• Wholesale Power Purchases
• Transmission for Others
• Transmission by Others
• Canadian Imports & Exports
• Power Marketer Transactions

Retail Transaction Details
• Retail Sales by Rate Schedule
• Monthly Electric Company Sales
• Top Retail Purchasers

Utility Regulatory Financials
• Comparative Balance Sheet
• Statement of Income
• Statement of Cash Flow
• Statement of Retained Earnings
• Distribution of Salaries & Wages
• Electric Operating Revenues
• Electric Plant in Service
• Accumulated Provision for Depreciation, Amortization & Depletion
• Accumulated Provision for Depreciation Electric Utility Plant
• Taxes, Tax Equivalents & Services During Year

SEC 10K & 10Q Financials
• Statement of Income & Cash Flow
• Daily Stock Prices
• Financial Ratios & Statistics

Control Area Operations Statistics
• Monthly Capabilities at Peak Demand
• Net Energy for Load & Peak Demand
• Scheduled & Actual Interchange



EV Power includes: Regulated financial data, SEC financial data, retail and wholesale power volumes and dollars, existing and future generating capacity, power station production costs, operation statistics for companies and plants, and market price data

NEW ENTRANTS

TIMELY COVERAGE OF FUTURE PLANS FOR POWER STATIONS

Who's building new coal plants?

How will companies meet renewable energy mandates?

What new capacity is covered by power contracts?

What power plants are my competitors building?

How can I stay on top of the development and planning history or specific projects?

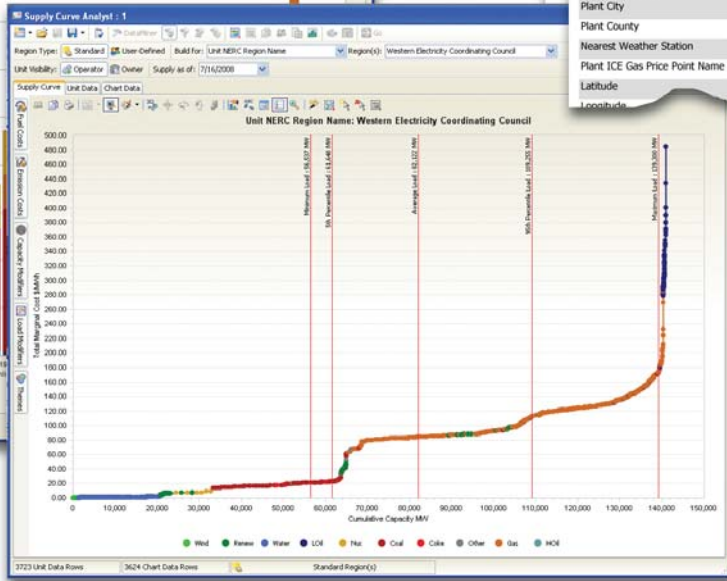
New Entrants is a companion service to EV Power that tracks development of new generation projects. Ventyx's unique approach to researching new power station additions, retirements and rerates, marries detailed news searches and telephone research with web scouring technology that notifies our analysts of changes in identified reference sources. New Entrants then notifies you of any changes for projects you select.

This approach coupled with web delivery allows us to provide the most comprehensive and timely information available on power market capacity changes. Extensive plant reports are available for every project developed since 2000.

Our researchers follow the development of each project and its progress through various stages -- announcement, permitting, construction (or cancellation), testing and Operation -- updating New Entrants daily with the latest information.

New Entrants includes:

Plant site description, map, project size and dependable capacity added or removed from the energy markets, descriptions of each phase of multi-phase projects, dates of important milestones (permits, construction, testing), unit configuration, output purchases, ownership, and extensive notes including reference source and date.



New Entrants Report

Plant Overview for Delta Energy Center:

Delta Energy Center is a newbuild project that consists of 1 phase. The phase became operational as of June 17, 2002 and has added an additional 943.50 megawatts to the power supply. The project utilizes Siemens Westinghouse Power Corp & Siemens Westinghouse Power Corp/Toshiba & Toshiba technology and is fired by Natural Gas. Of the capacity in the operational and in development phases, 20.00 megawatts have been contracted to specified buyers. The first reference for this project is dated September 17, 1998 and it was last edited on May 15, 2008.

Plant Attribute	Plant Attribute Value
Plant Name	Delta Energy Center
Plant Aliases	Delta Energy
Plant Operator Name	Delta Energy Center LLC
Plant NERC Region Abbrev	WECC
Plant NERC Sub Region Abbrev	CA
Plant State Abbrev	CA
Plant City	Pittsburg
Plant County	Contra Costa
Nearest Weather Station	Fairfield / Travis Air Force Base
Plant ICE Gas Price Point Name	PG&E Citygate
Latitude	38.0152
Longitude	-122.0420

Unit	Unit Status	Primary Fuel	Commercial Online Date	Nameplate Capacity MW	Summer Capacity MW	Winter Capacity MW	Duct Fired Capacity MW	EV Fully Loaded/Generator Tested Heat Rate Btu/kWh	Generator Manufacturer	Generator Model
OP	OP	NG	06/17/2002	943.500	811.300	886.900	83.000	6,924	Siemens Westinghouse Power Corp/Toshiba	Siemens Westinghouse Power Corp 501FD/Toshiba-Unknown

EV MARKET-OPS

DETAILED OPERATIONAL DATA
THAT'S EASY TO USE

Which SO₂ emissions control strategies are currently being utilized?

How is a company choosing to operate their units?

How many hours in a given week was a baseload unit out of service?

What's the best strategy to buy, sell, or generate power in an LMP Market?

Do you need "model-ready" data for your market models?

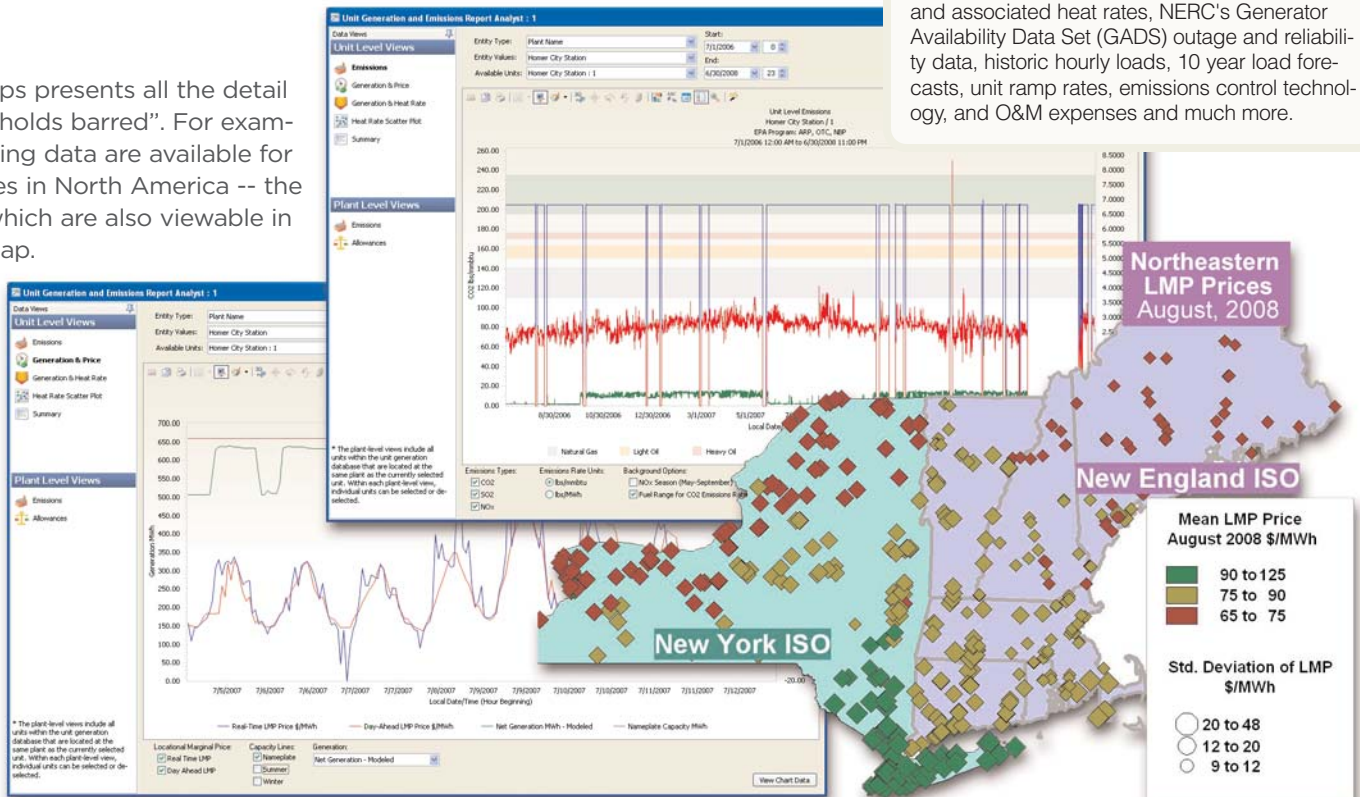
How many NO_x emission allowances does a company currently hold?

EV Market-Ops digs down into the details. Its primary components are hourly data for generation (US and parts of Canada), heat rates, emissions (EPA CEMS), loads and prices (FERC and ISO). We have pulled together these extremely useful and cumbersome collections of data and put them in an easy-to-use, extremely flexible application.

Unit costs are linked to generation and Locational Marginal Price data to enable EV Market-Ops users to review hourly operating revenue and profit streams for nearly 2,600 of the nation's largest generating units. EV Market-Ops also compiles and formats extensive supply and demand data for use as inputs to most market models. The data is updated daily.

EV Market-Ops differs from competing products in quality and quantity. First, all raw data are reviewed for accuracy and corrected or estimated where wrong/incomplete. Second, we add value to all raw operations data by making sure that when presented, they have an appropriate market context. Third, we create analytical tools to make your analyses faster and easier.

EV Market-Ops presents all the detail possible "no holds barred". For example, LMP pricing data are available for all price nodes in North America -- the majority of which are also viewable in EV Energy Map.



DATA COVERAGE:

Market Drivers
• ISO Realtime & Day Ahead LMP Pricing
• ISO Ancillary Pricing
• ISO Zonal Load Data
• ISO Total Load Data
• Control Area Actual Peak Load Data
• Historical Demand by Zone (Ventyx loads based on FERC)
• Market Marginal Costs - Lambda
• ISO Hub and Zone Definitions
Forecasts
• ISO Zonal Load Forecasts
• Control Area Forecast Peak Load Data
• Forecast Demand by Zone (Ventyx loads based on FERC)
Generator Operations Statistics
• Annual & Monthly Unit Operations Summary (US, Ontario, Alberta)
• Hourly Unit Generation (US, Ontario, Alberta)
• Unit Capacity Blocks
• Unit Ramp rates
• GADS Availability Report
• GADS Outage Cause Report
Emissions Operations Statistics
• Unit Emission Control Installations
• Unit Level NO _x , SO ₂ , and CO ₂ Total Emissions for the US and Canada
• Unit Level Emission Allowance Holdings

EV Market-Ops includes: Estimated fuel, fixed and variable costs for each unit, capacity blocks and associated heat rates, NERC's Generator Availability Data Set (GADS) outage and reliability data, historic hourly loads, 10 year load forecasts, unit ramp rates, emissions control technology, and O&M expenses and much more.

EV WEATHER

BUILT FROM THE MOST RELIABLE AND COMPLETE SOURCE DATA AVAILABLE

Did you know...

- ... **temperature** is the biggest effector of demand in the ISO markets?
- ... **drought** is one of the biggest threats to nuclear power generation?
- ... **hurricanes** have the largest effect on oil and natural gas production in the Gulf of Mexico?
- ... **snowpack** is a central factor affecting hydro power in the northwest?

EV Weather keeps you connected with precise and reliable data that captures all of these events

The number one factor impacting the day to day operations of energy markets is weather; it's unpredictable and ever-changing. EV Weather tames this for you, and provides you with a reliable, easy way to integrate weather data into your project.

EV Weather datasets have been upgraded to utilize the most complete and accurate historical and forecast data available from the National Climatic Data Center and the National Weather Service.

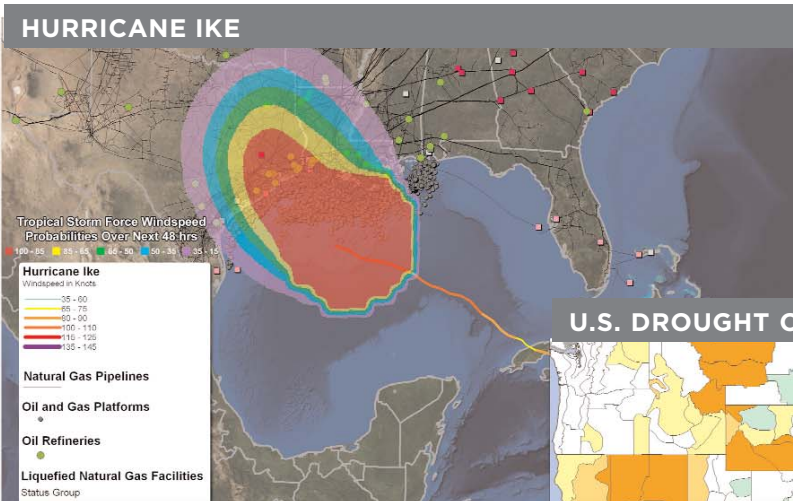
Grab the raw data that is relevant to your analysis, or use our "Weather Enhanced" datasets to view energy specific data like hourly generation, load or price side-by-side with the local weather conditions.

Weather Enhanced Data Sets in the Velocity Suite:

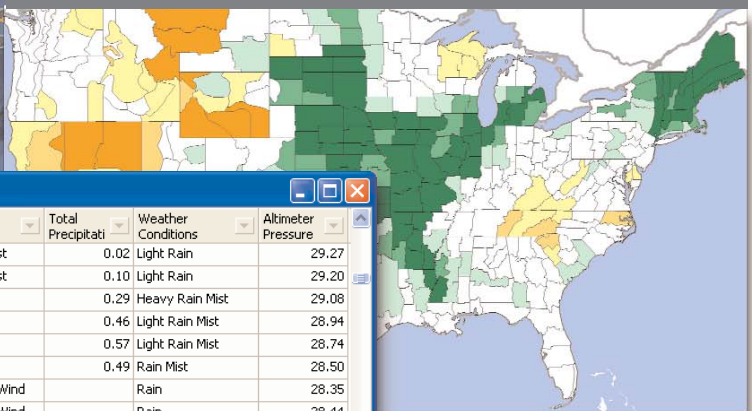
EV Power
• Monthly Generation and Consumption
• ICE 10x Power and Gas Indices
• Enerfax Power and Gas Prices
EV Fuels
• Monthly Fuel Consumption
• Enerfax Power and Gas Prices
• Enerfax Petroleum Prices
• ICE 10x Power Gas Indices
EV Market Ops
• Unit Generation and Emissions
• Historical Zonal Hourly Load
• ISO Day Ahead and Real-time Hourly Pricing
• Historical ISO Zonal Hourly Load
• Forecast ISO Zonal Hourly Load

EV Weather includes:

- Hourly and daily weather observations
- Temperature forecasts
- Zonal heating and cooling degree day calculations
- Hydro stream-flow and generation
- Weather-normalized power demand
- Up-to-date snow-pack measurements
- Regional climate normal reference data
- Hurricane storm tracks
- All geographically described using EV Energy Map



U.S. DROUGHT CONDITIONS



Weather Station Name	Local Datetime (Hour)	Temperature (Dry)	Wind Speed mph	Wind Gust mph	Wind Direction	Total Precipitation	Weather Conditions	Altimeter Pressure
William P Hobby Arpt	09/12/2008 20	80.0	41.4	58.7	North-Northeast	0.02	Light Rain	29.27
William P Hobby Arpt	09/12/2008 21	78.0	47.2	69.0	North-Northeast	0.10	Light Rain	29.20
William P Hobby Arpt	09/12/2008 22	77.0	59.8	78.3	North	0.29	Heavy Rain Mist	29.08
William P Hobby Arpt	09/12/2008 23	76.0	55.2	70.2	North	0.46	Light Rain Mist	28.94
William P Hobby Arpt	09/13/2008 00	75.0	62.1	87.5	North	0.57	Light Rain Mist	28.74
William P Hobby Arpt	09/13/2008 01	75.2	57.5	95.5	North	0.49	Rain Mist	28.50
William P Hobby Arpt	09/13/2008 02				Variable or No Wind		Rain	28.35
William P Hobby Arpt	09/13/2008 03				Variable or No Wind		Rain	28.44
William P Hobby Arpt	09/13/2008 04				Variable or No Wind		Rain	28.69
William P Hobby Arpt	09/13/2008 05		74.8		North-Northeast		Rain	28.96

1,338 Row(s) Returned

FTR TRADER

DESKTOP ANALYTICAL TOOLS FOR
FTR TRADERS AND RISK MANAGERS

Which nodal paths have historically posed congestion risk and how much?

Which FTR contracts have consistently traded at a premium?

How is my FTR portfolio performing to date?

What are the most frequently traded FTR contracts?

Where are my competitors making money in FTR markets?

How does my portfolio rank against my competitors?

What strategies are my competitors pursuing?

FTR Trader combines critical FTR market data with the Velocity Suite's powerful visualization, mapping and querying capability. This product allows FTR market participants to evaluate their current market position and new market opportunities at the click of a button.

Use this tool to see how participant portfolios are performing to date based on actual market results. You can evaluate a potential FTR position between any Source/Sink pair by viewing their historic auction value and past performance.

FTR Trader allows users to display FTR portfolios in EV Energy Map to help gain an understanding of how market fundamentals impact FTR contract values as well as hedging and investment strategies. FTR strategies can be effectively demonstrated to management by showing FTR portfolio holdings, power plants, transmission lines and service territories together on one map.

ISO monthly & annual auction results:

- Who bought which FTR positions?
- How much did they pay for them?

A Custom Portfolio Tool That Allows Users to:

- Create a custom portfolio that includes FTRs that have never been traded
- Evaluate the current and historic performance of any source-sink FTR pairs
- Easily track and modify your strategy before purchasing your portfolio

Historical performance for FTR source/sink pairs:

- What was the actual value of the contract?
- Did the owners of this contract earn a return?
- How is the contract to date?

Virtual Analysts that allow users to:

- Evaluate historical performance of FTR positions
- Determine which companies currently own each position
- Track the value of current FTR holdings
- View comprehensive FTR portfolio data at a company level
- Assess the value of a company's portfolio

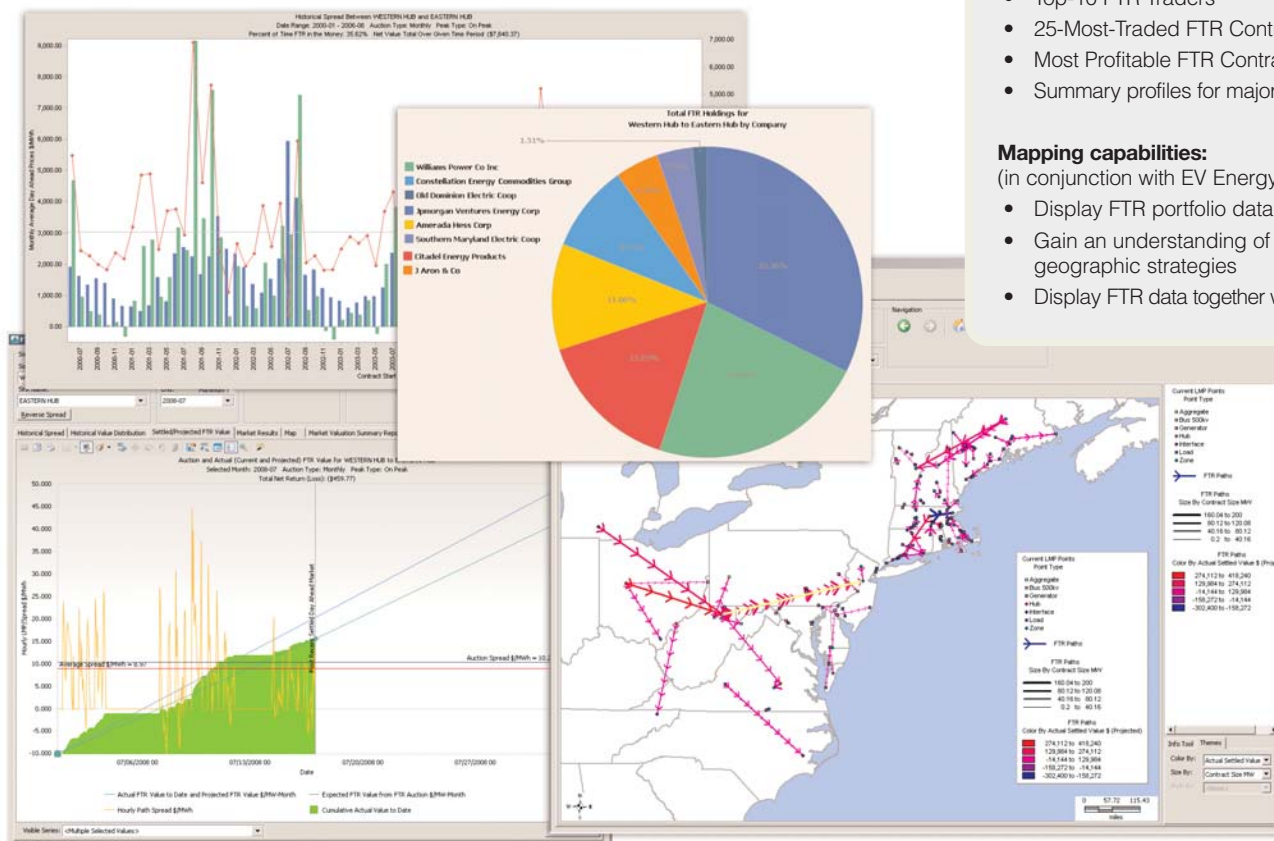
Customized reports that track:

- Top-10 FTR Traders
- 25-Most-Traded FTR Contracts
- Most Profitable FTR Contracts
- Summary profiles for major price hubs

Mapping capabilities:

(in conjunction with EV Energy Map):

- Display FTR portfolio data in Map
- Gain an understanding of companies' geographic strategies
- Display FTR data together with market fundamentals



Ventyx regularly tracks regional market developments across the continent as developing markets emerge

POWER TRANSACTIONS

FERC EQR

Who does a power marketer sell power to, what are terms?

What was the price for power delivered to a control area?

How much electricity did a wind company sell?

What power contracts does a utility hold?

Over 1,900 public electric utilities and power marketers are required to electronically file Electric Quarterly Reports (EQR) summarizing the contractual terms and conditions in their agreements for all jurisdictional services (including market-based power sales, cost-based power sales, and transmission service) and transaction information for short-term and long-term market-based power sales and cost-based power sales during the most recent calendar quarter. This data is released quarterly and many data items are available with hourly granularity.

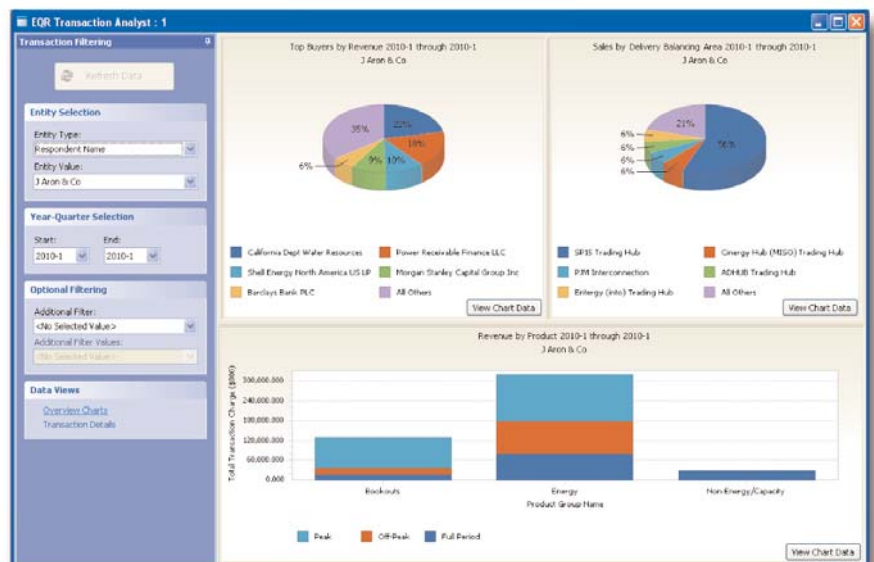
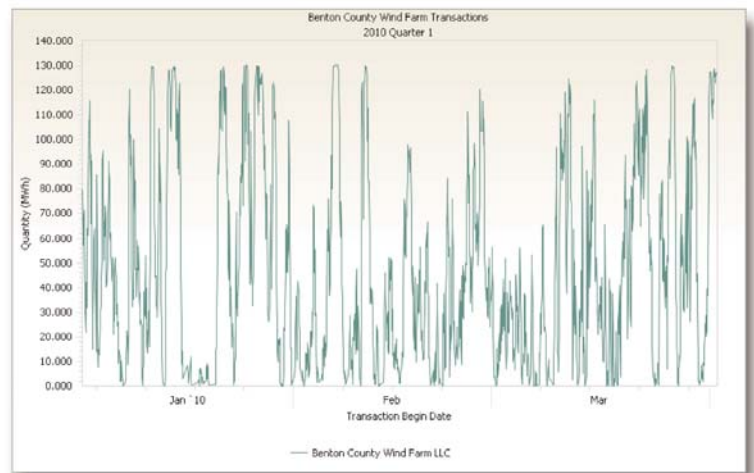
Content

This dataset includes more than 200 million rows, consisting of approximately 8 million records per quarter. It is very difficult for end users to manipulate, understand and mine this data for useful information.

Currently, there is no other single source for this information. These include Interconnection Requests, Regulation & Frequency Response, Energy and Book outs data. This data is often requested by clients and prospects.

Virtual Analyst

The Virtual Analyst easily allows quick answers to questions about who a company is doing business with and where. It also details out the products that the company sells.



EV GRID MAP

VISUALIZE NODAL MODEL
OUTPUT IN THE VELOCITY SUITE

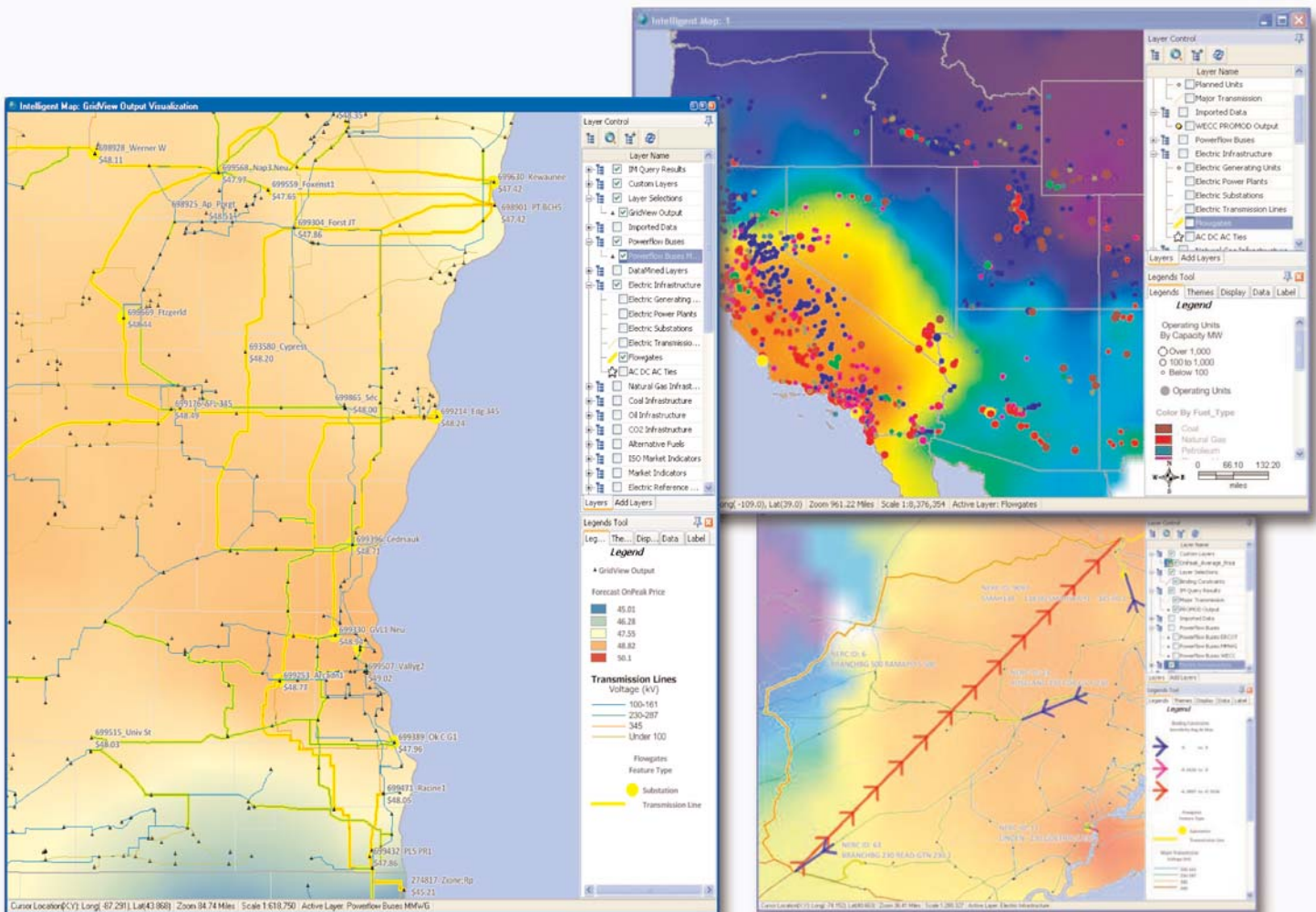
How can I visualize nodal model forecasts?

How is transmission congestion affecting forecast prices?

What power prices can I expect near a potential power plant project?

EV Grid Map enables users to easily import model output at the bus level, locate buses at their exact geospatial location in the power grid (rather than a schematic representation), and create contour maps and other analysis to pinpoint high and low prices in model runs.

Used in combination with the Velocity Suite's analysis tools, geospatial content, and historical operational and market data, EV Grid Map empowers users to examine forecast model results alongside historical LMP prices, flowgates, FTR portfolios, proposed generation and transmission projects, and much more.



EV TRANSMISSION

SPEND TIME ON MODELING AND ANALYZING DATA - NOT CHASING IT

How does hourly flow compare to operational limits?

What is the capacity utilization of Hydro Quebec exports?

What outages are scheduled and will they affect the markets?

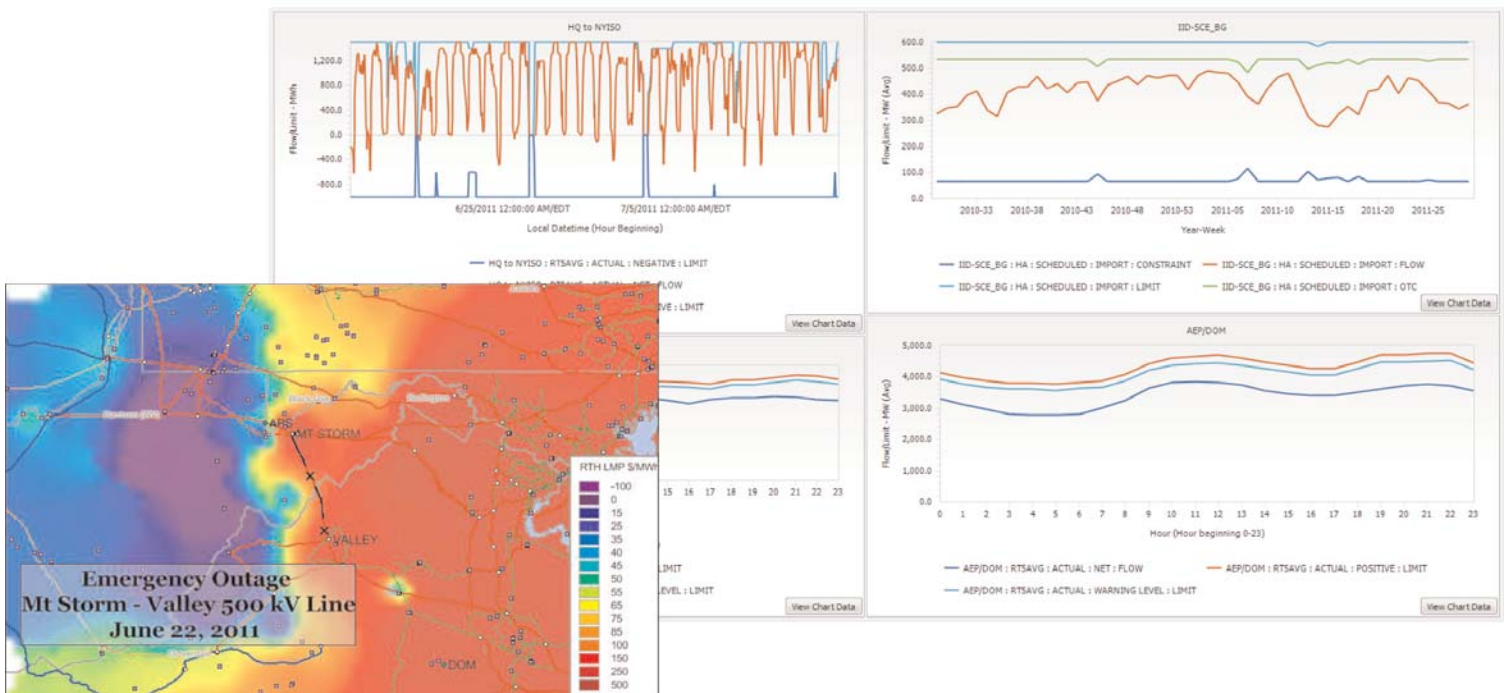
EV Transmission is designed to help complete the supply and demand picture by offering hourly scheduled and actual flow data, transmission limits, TLR events and scheduled and actual outages.

Transmission infrastructure and data relationships have been extensively developed so that outages can be defined by which specific transmission line, substation, unit or zone is affected. This can all be easily visualized in EV Energy Map or the Transmission Path Virtual Analyst to complete your analysis.

We pull together the data from multiple sources so that you can spend time on modeling and analysis instead of chasing after data.

Available Data:

- Hourly transmission flow for all North American ISO markets and regional entities like BPA, WECC and WAPA.
- Scheduled and actual transmission outages for the ISO markets
- Transmission Loading Relief (TLR) events by flowgate and branch
- Complete transmission infrastructure integrated into EV Energy Map





www.ventyx.com

Ventyx, an ABB company, is the world's leading supplier of enterprise software and services for essential industries such as energy, mining, public infrastructure and transportation. Ventyx solutions bridge the gap between information technologies (IT) and operational technologies (OT), enabling clients to make faster, better-informed decisions in both daily operations and long-term planning strategies.

Some of the world's largest private and public enterprises rely on Ventyx solutions to minimize risk, enhance operational and financial performance, and execute the right strategies for the future.

To learn more about Ventyx solutions visit www.ventyx.com or contact a Ventyx sales representative today.